



## Airways, hila, and mediastinum

The mediastinum—anatomy and classification

---

---

---

---

---

---

### What will I gain from this video?

After watching this video, you will know how radiologists divide and classify the mediastinum and what anatomical structures lie within the mediastinum.

---

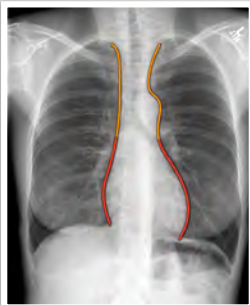
---

---

---

---

---



---

---

---

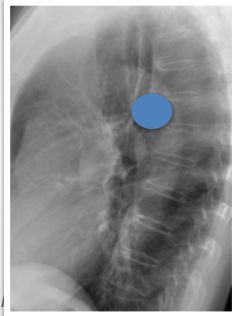
---

---

---

**A need for clarity**

**Anterior, middle, or posterior?**



---

---

---

---

---

---

---

---

**Felson classification**



---

---

---

---

---

---

---

---

**Felson classification**



---

---

---

---

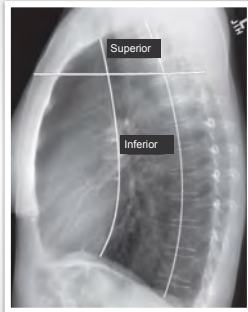
---

---

---

---

### Felson classification



---

---

---

---

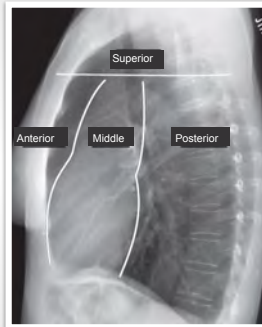
---

---

---

---

### Classic anatomical classification



---

---

---

---

---

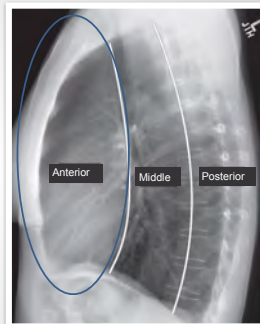
---

---

---

### Anatomical structures in the ANTERIOR mediastinum

- Thymus
- Vessels
- Lymph nodes/lymphatics
- Nerves
- Fat



---

---

---

---

---

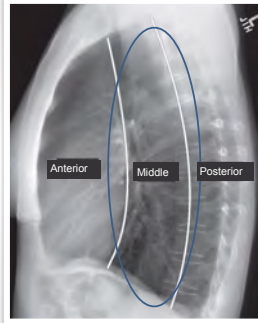
---

---

---

**Anatomical structures in the MIDDLE mediastinum**

- Esophagus
- Tracheobronchial tree
- Vessels: aorta, SVC, IVC
- Lymph nodes/lymphatics
- Nerves: phrenic
- Fat



---

---

---

---

---

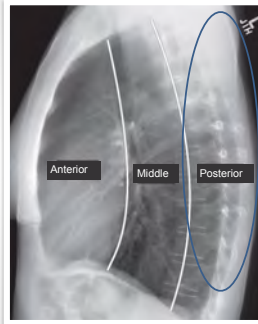
---

---

---

**Anatomical structures in the POSTERIOR mediastinum**

- Vessels: azygos
- Lymph nodes/lymphatics (thoracic duct)
- Nerves: sympathetic chain and intercostals
- Fat



---

---

---

---

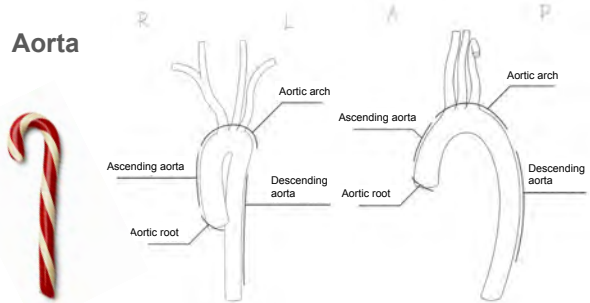
---

---

---

---

**Aorta**



---

---

---

---

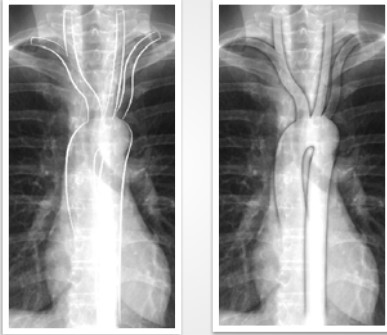
---

---

---

---

Aorta



---

---

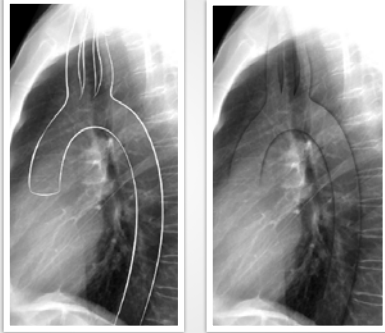
---

---

---

---

Aorta



---

---

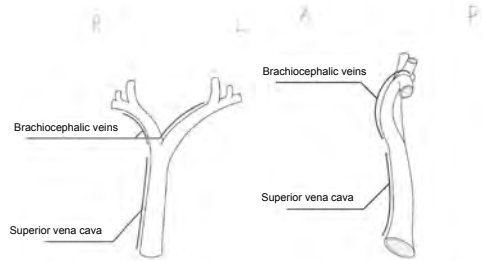
---

---

---

---

SVC



---

---

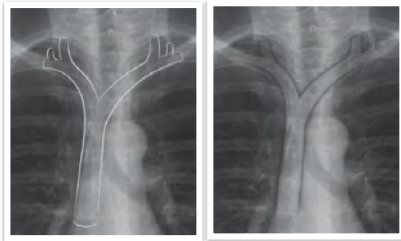
---

---

---

---

SVC



---

---

---

---

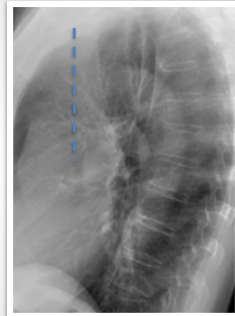
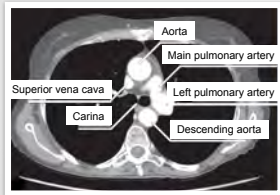
---

---

---

---

SVC



---

---

---

---

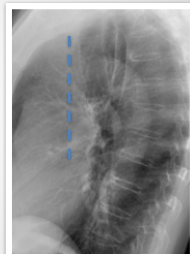
---

---

---

---

SVC



---

---

---

---

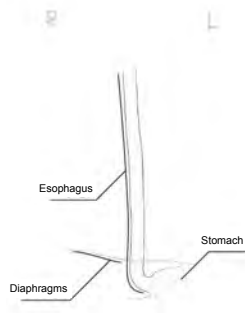
---

---

---

---

## Esophagus



---

---

---

---

---

---

---

---

## Esophagus



---

---

---

---

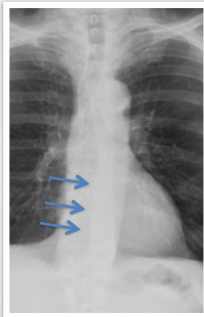
---

---

---

---

## Esophagus



---

---

---

---

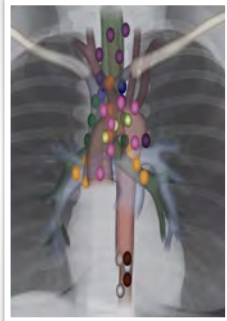
---

---

---

---

**Lymph nodes**



---

---

---

---

---

---

---

**Lymph nodes**



---

---

---

---

---

---

---

Use Felson's two line classification.

Add the superior line.

Remember the anatomy in each compartment.

---

---

---

---

---

---

---